



*Mortality and morbidity of
lung disease in Australia*

Janice Miller & John Shelton Agar

Burden of lung disease

■ Mortality

- ◆ Death rates

■ Morbidity

- ◆ Hospital separations
- ◆ GP consultations

■ Disability

- ◆ Daily life activities
- ◆ Disability-adjusted life years



Major lung diseases

- Asthma
- Chronic obstructive pulmonary disease (COPD)
- Lung cancer
- Pneumonia



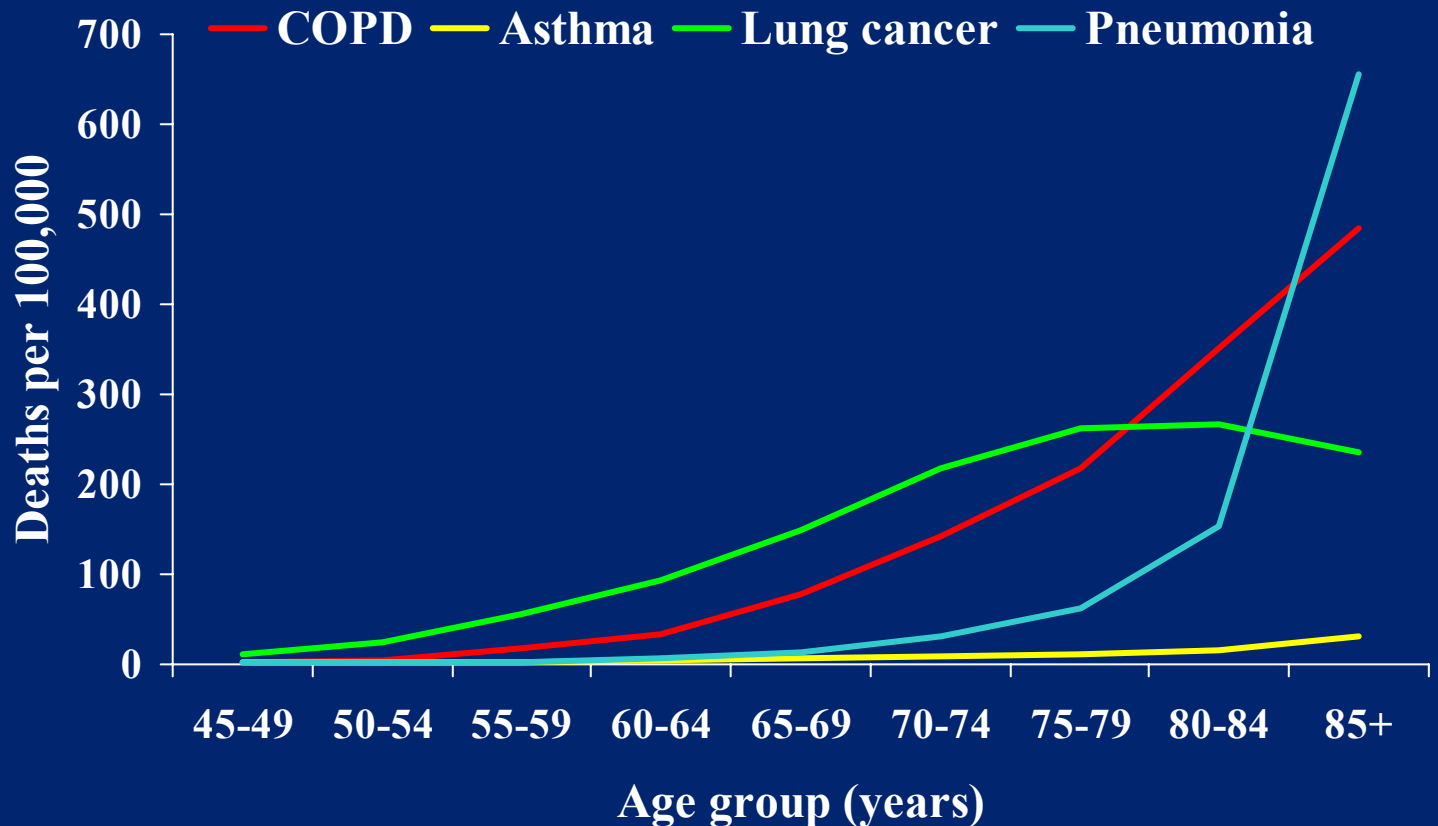
Mortality

- Underlying cause of death
- Contributory cause of death

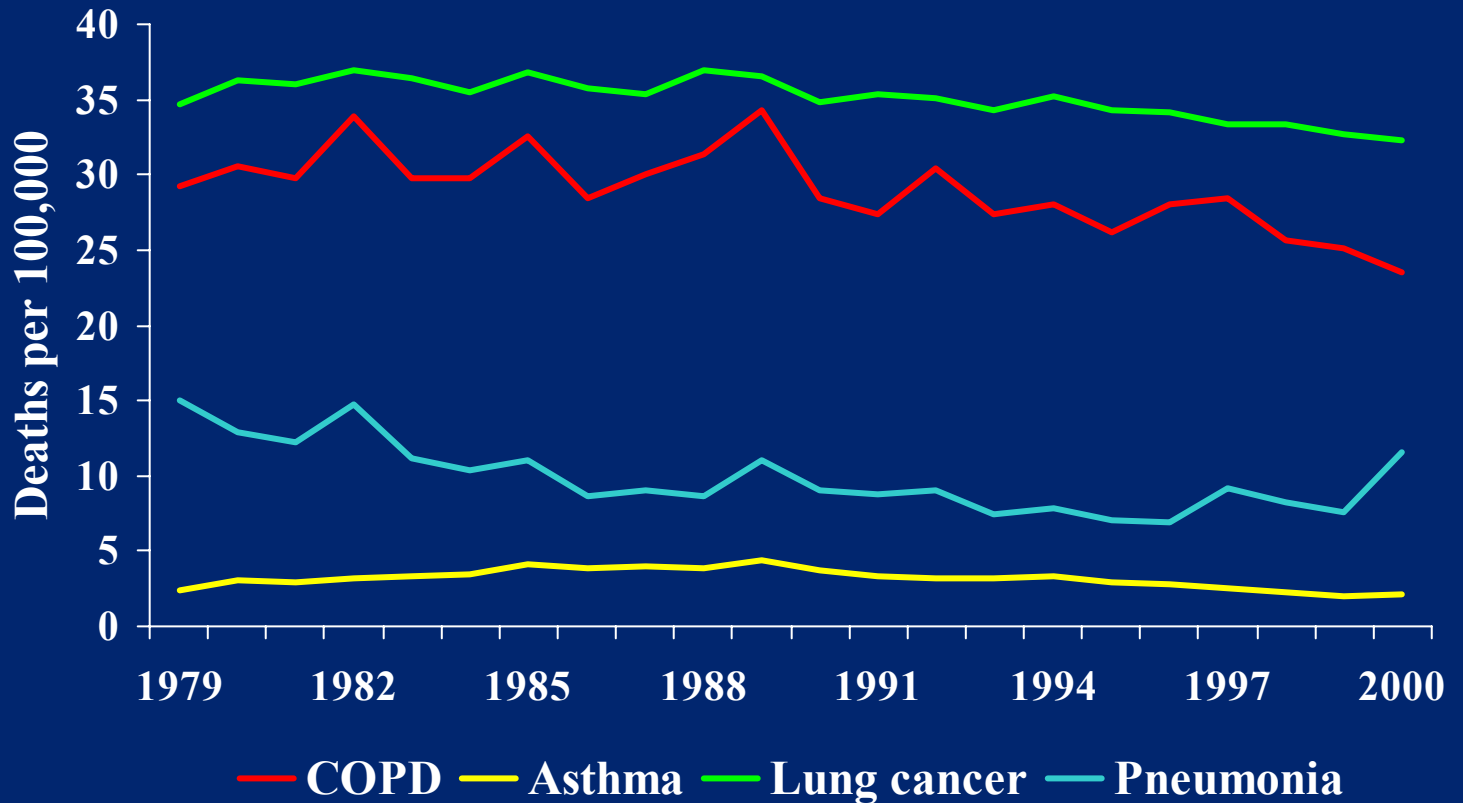
Lung disease as the underlying cause of death, 2000

	Males	Females
Lung cancer	4,587	2,291
COPD	3,281	2,015
Pneumonia	1,285	1,585
Asthma	169	285

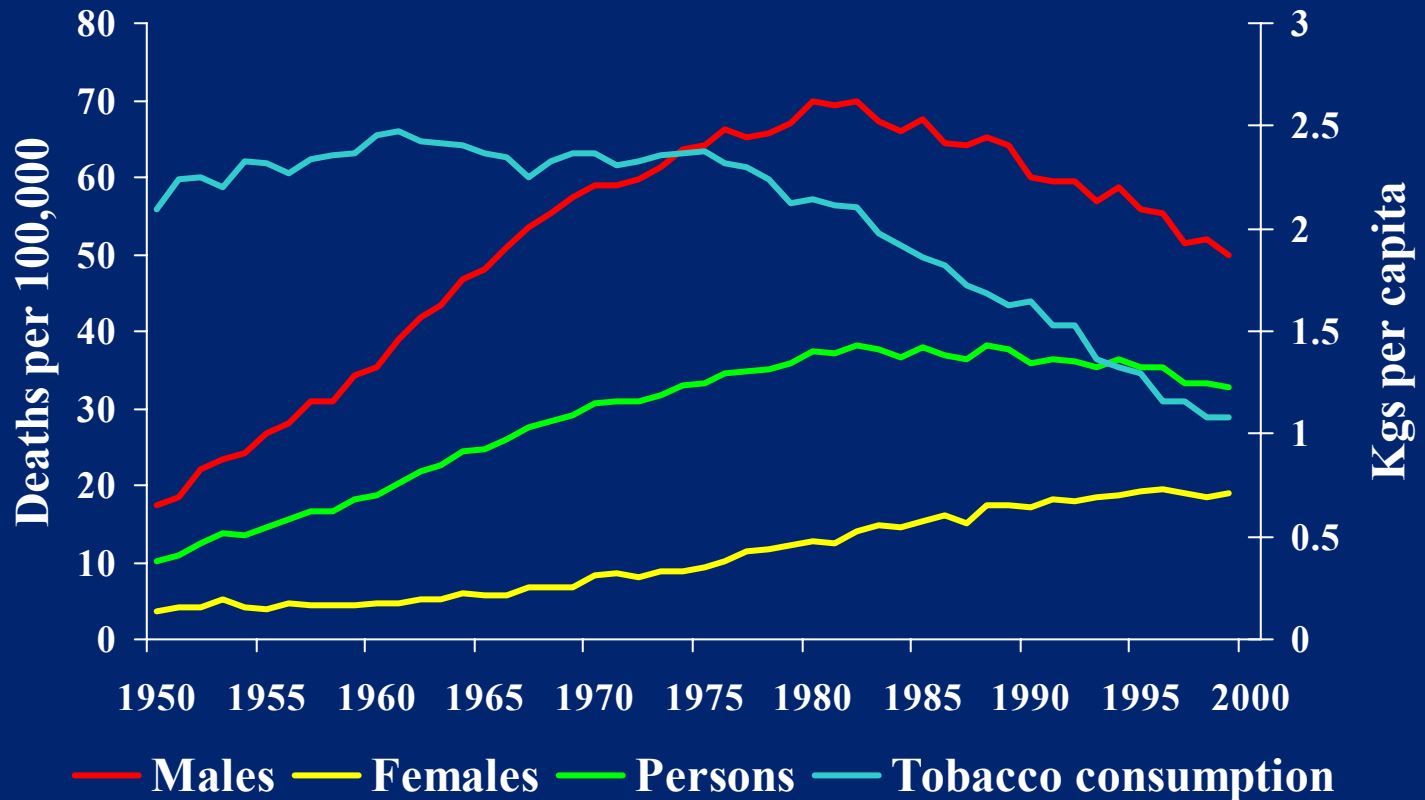
Underlying cause of death rates, 45 years & over, 2000



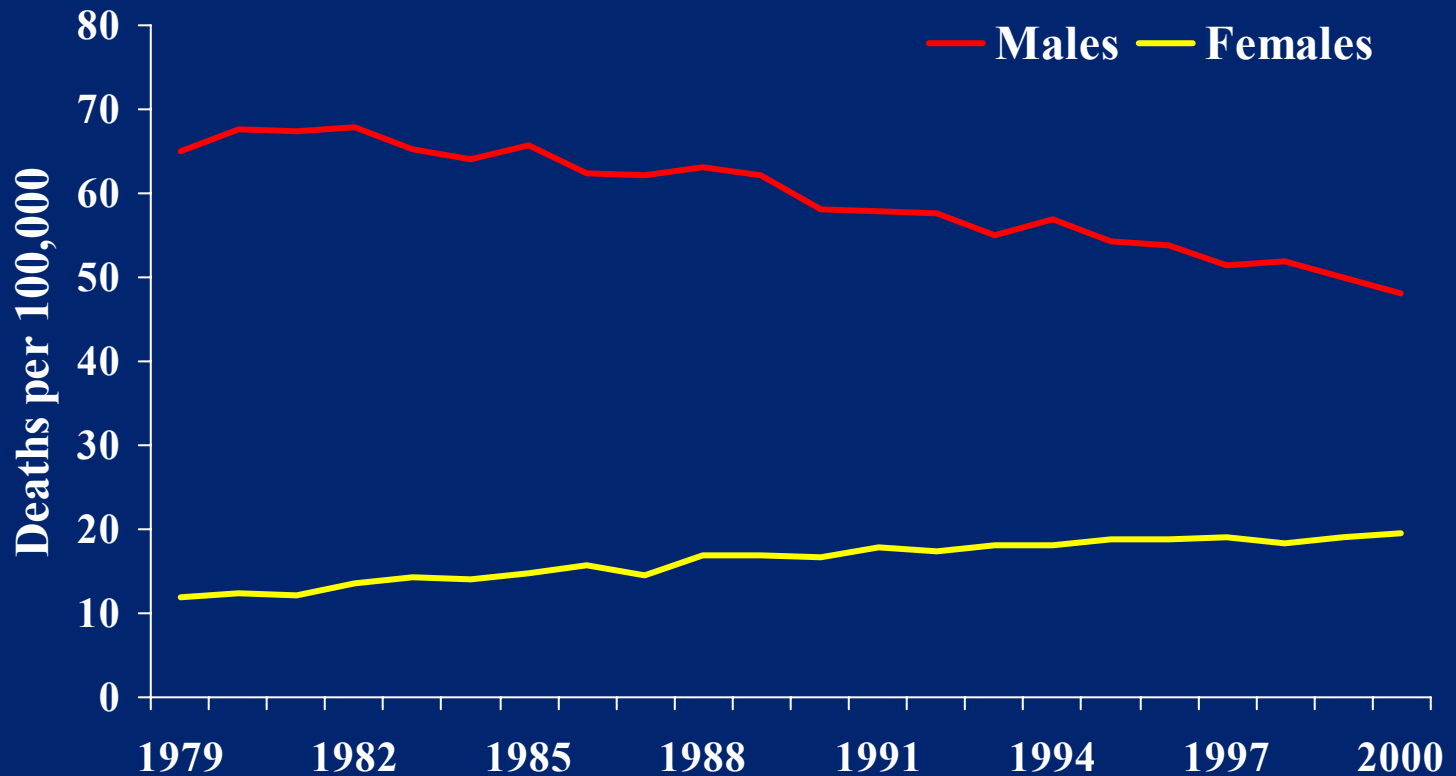
Trends in underlying cause of death rates, 1979-2000



Trends in tobacco consumption and lung cancer death rates, 1950-2000



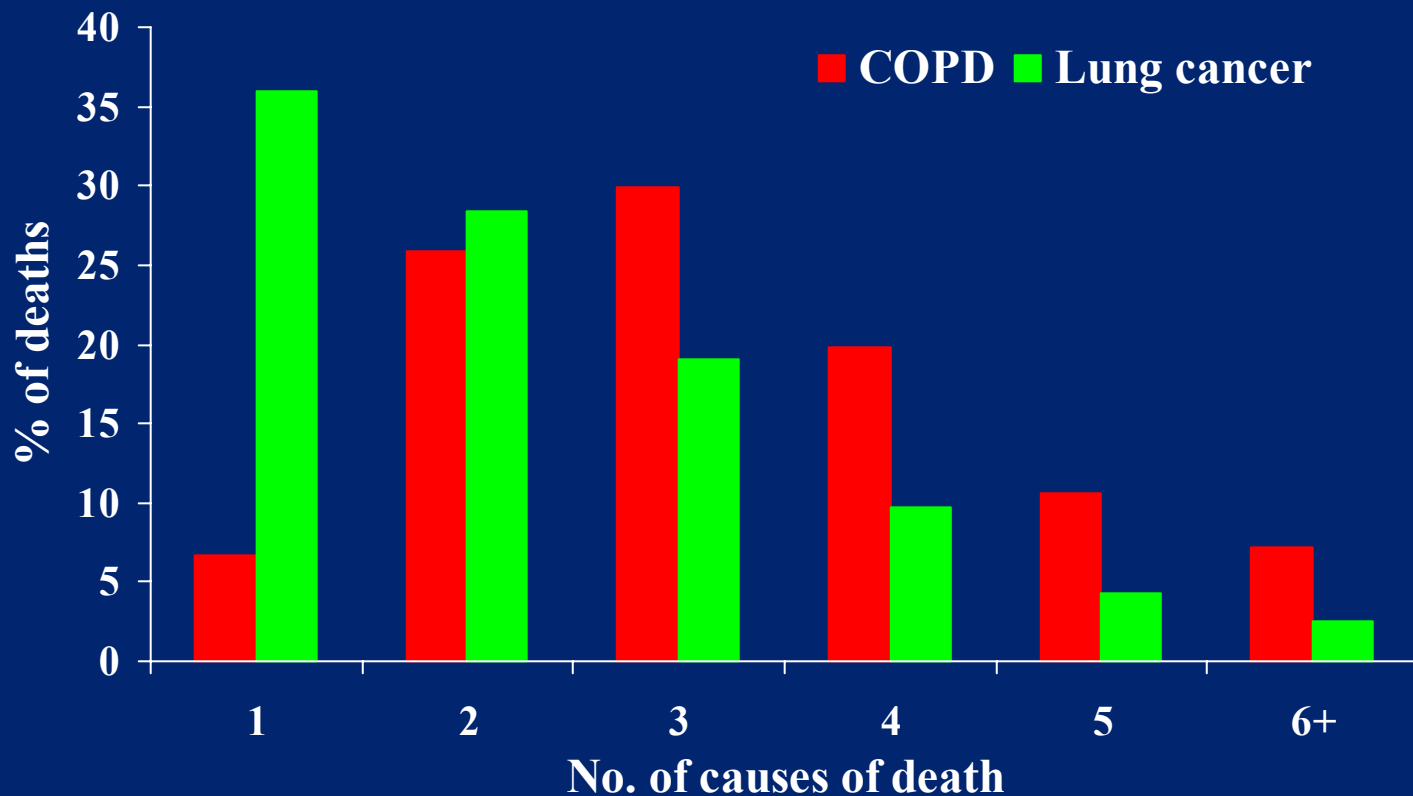
Trends in underlying cause of death rates by sex, lung cancer, 1979-2000



Cause of death coding

- **Prior to 1997**
 - ◆ Underlying cause of death
- **Since 1997**
 - ◆ All causes of death

Distribution of the number of listed causes of death, 2000



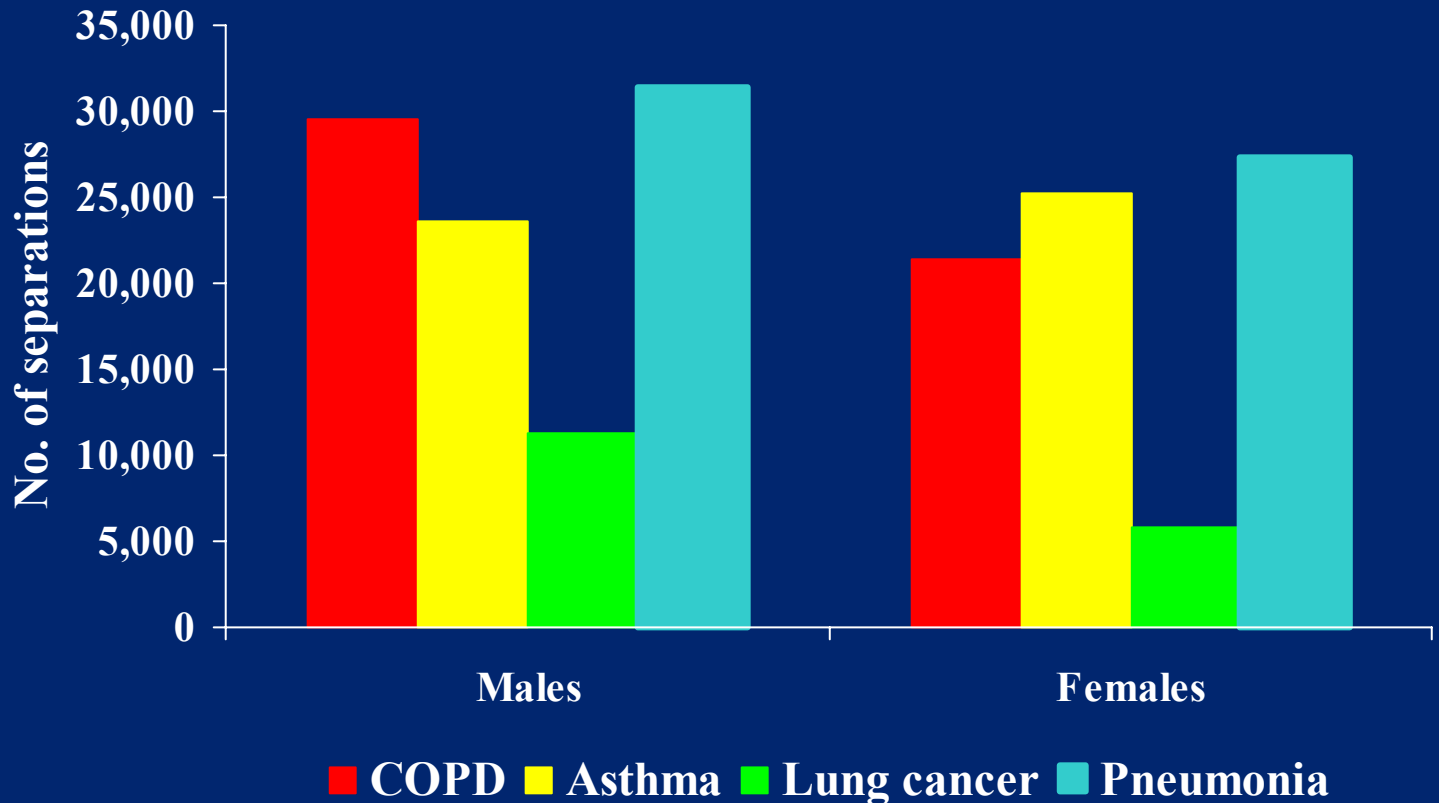
COPD as an additional cause of death, 2000

Underlying cause of death	No.	%
Heart disease	2,753	41.0
Lung cancer	875	13.0
Stroke	361	5.4
Other	2,718	40.6

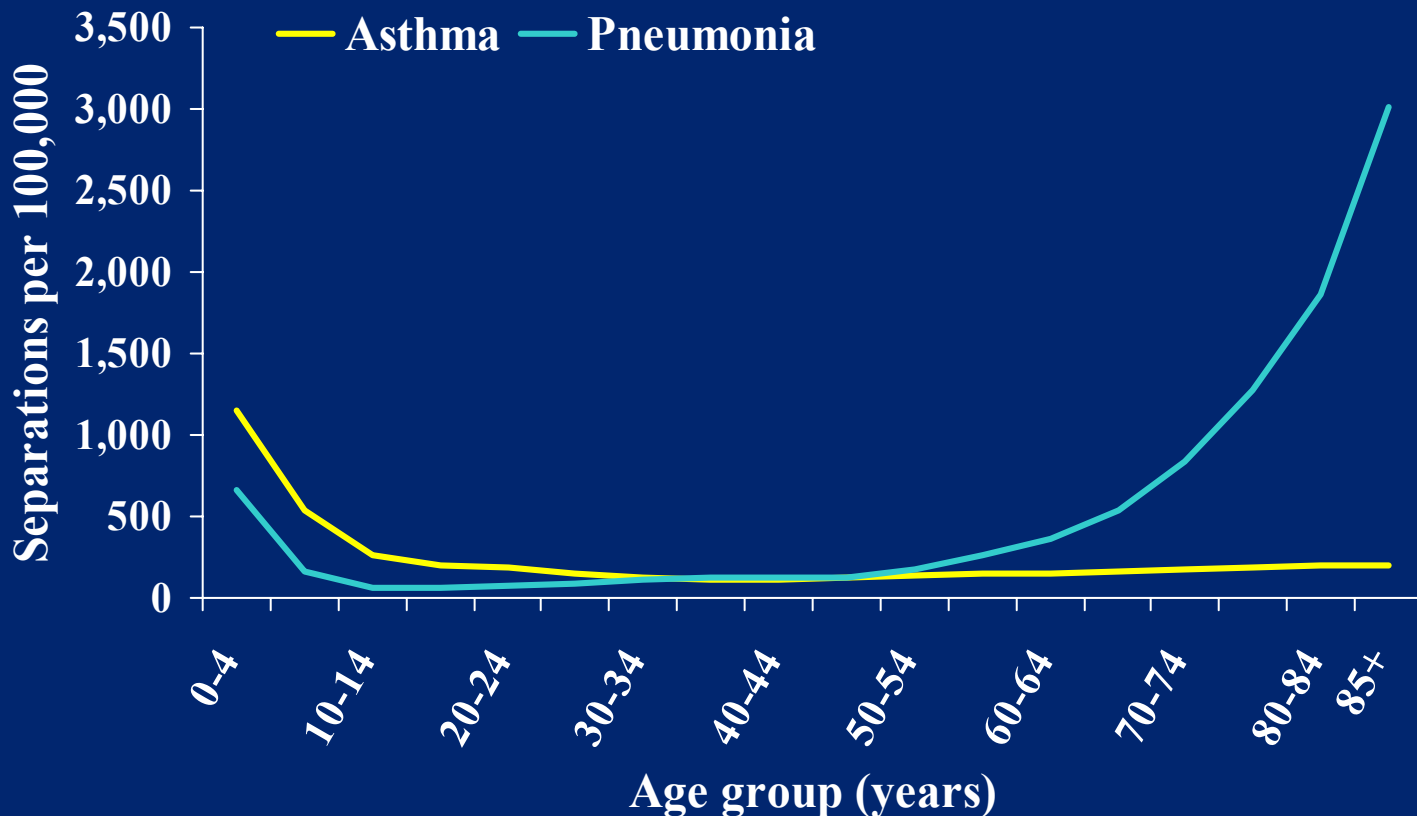
Morbidity

- Hospital separations
- General practitioner consultations
 - ◆ % of problems managed
 - ◆ Rate per 100 encounters

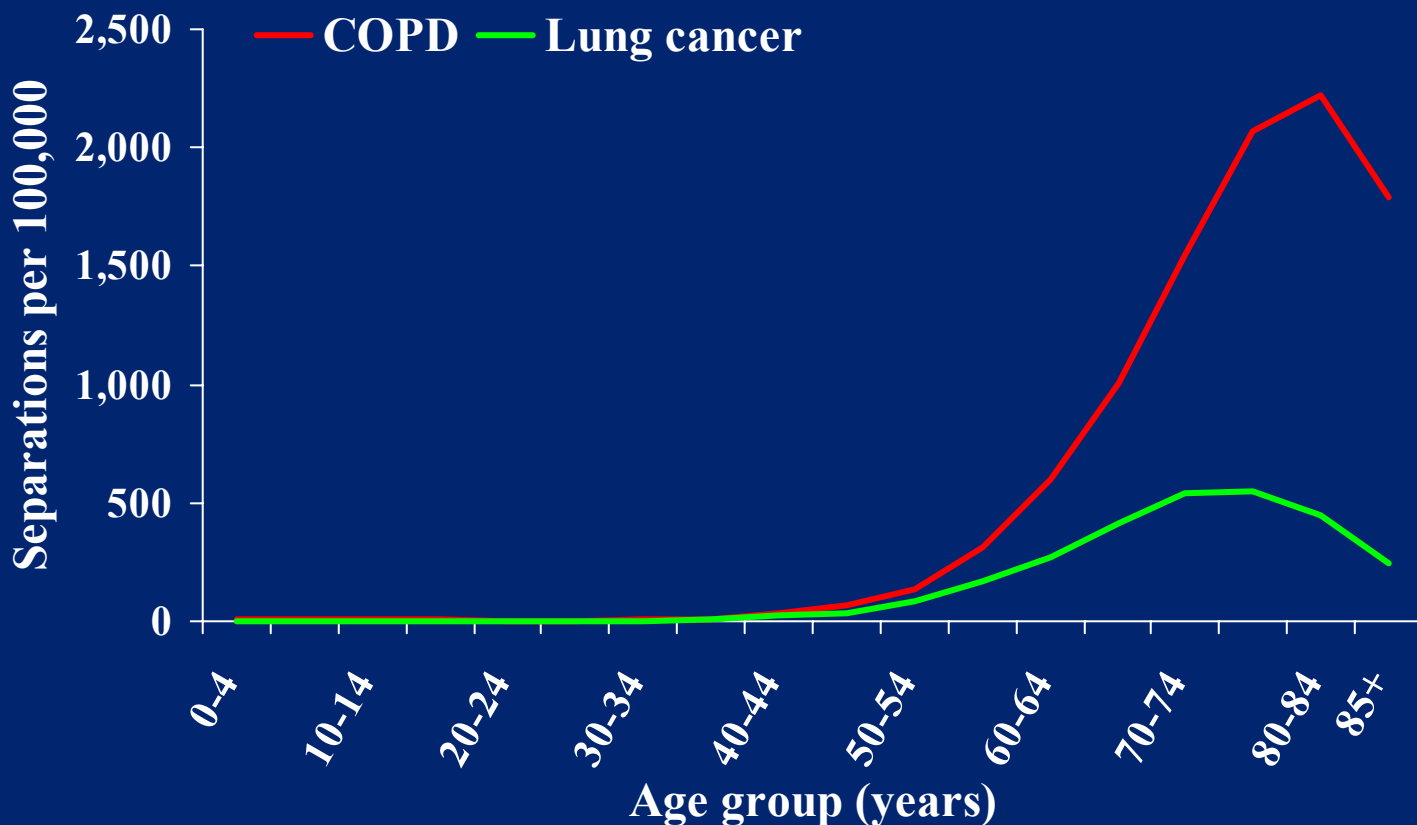
Number of hospital separations by sex, 2000-01



Hospital separation rates, asthma and pneumonia, 2000-01



Hospital separation rates, COPD and lung cancer, 2000-01



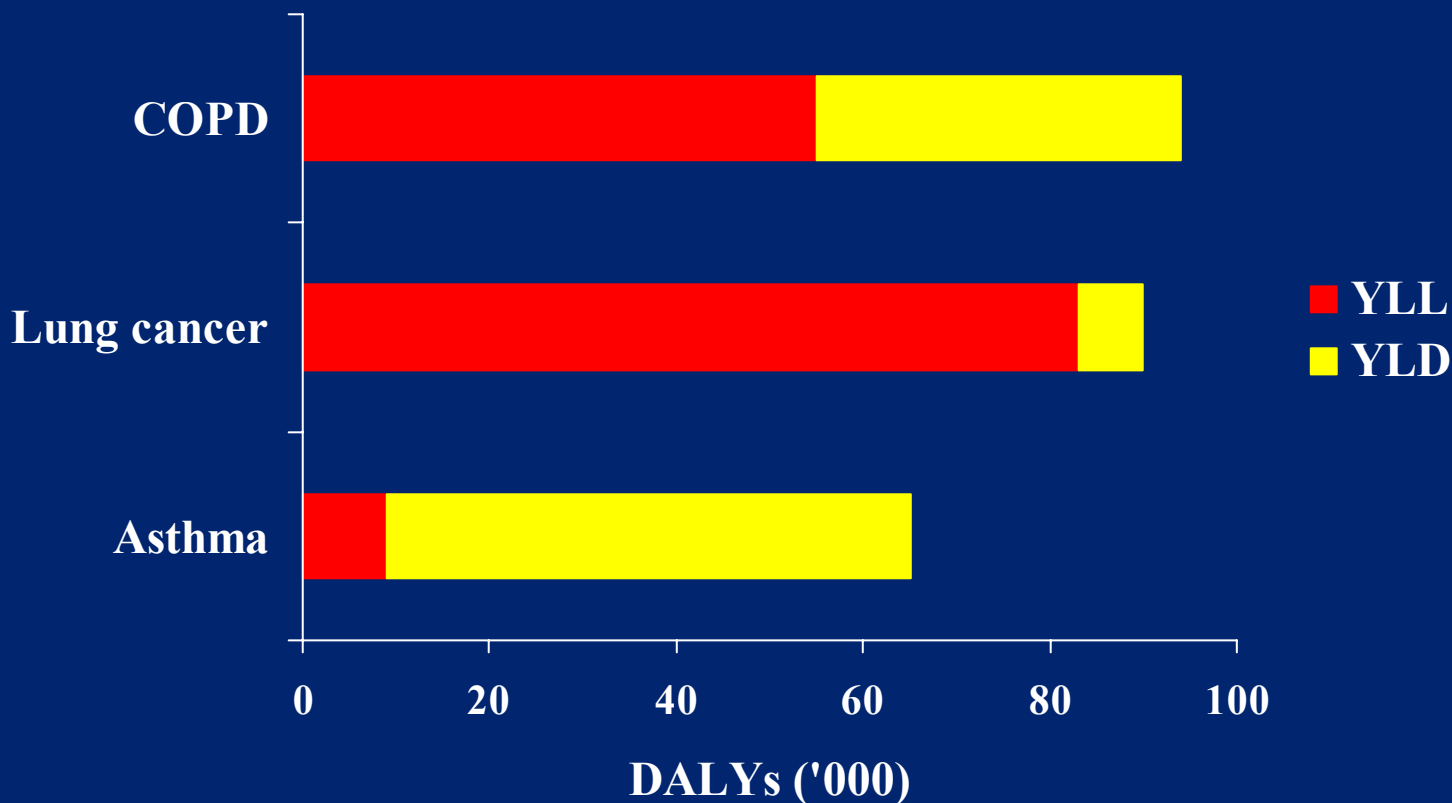
GP consultations, 2000-01

Problem managed	%	Rate per 100 encounters	Rank
URTI	4.8	6.9	2
Asthma	2.0	2.8	6
Bronchitis/bronchiolitis	1.9	2.7	8
COPD	0.5	0.7	> 30

Disability

- **Daily life activities**
- **Disability-adjusted life years (DALYs)**
 - ◆ **DALY = YLL + YLD**
 - ◆ **Years of life lost to premature mortality (YLL)**
 - ◆ **Years of 'healthy' life lost to disability (YLD)**

Disability-adjusted life years (DALYs) attributed to lung diseases, 1996





Conclusions

- **Burden varies across**
 - ◆ Disease severity
 - ◆ Age groups
- **Reflect trends in tobacco smoking**
 - ◆ Mortality